

***EI SAADANI
GLAUCOMA TUBE
IMPLANT {EGTI}
A novel Patent***

By

Abdel Khalik El Saadani MD
Faculty of Medicine
Menoufia University



Glaucoma

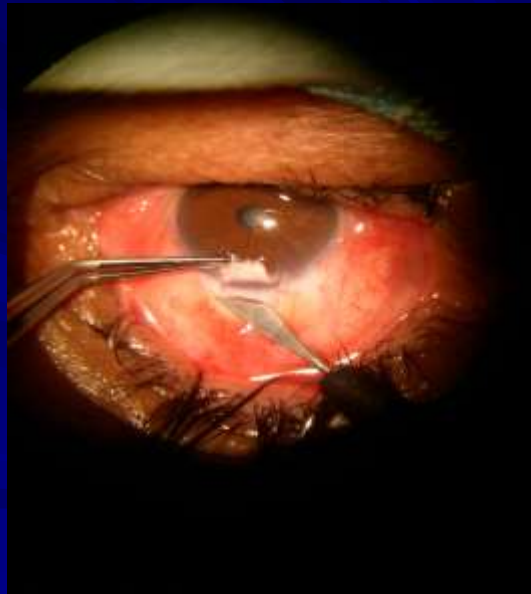
- ***Is the most common cause of irreversible blindness worldwide.***
- ***Over the last decade several novel surgical treatment options and devices for glaucoma have been developed.***

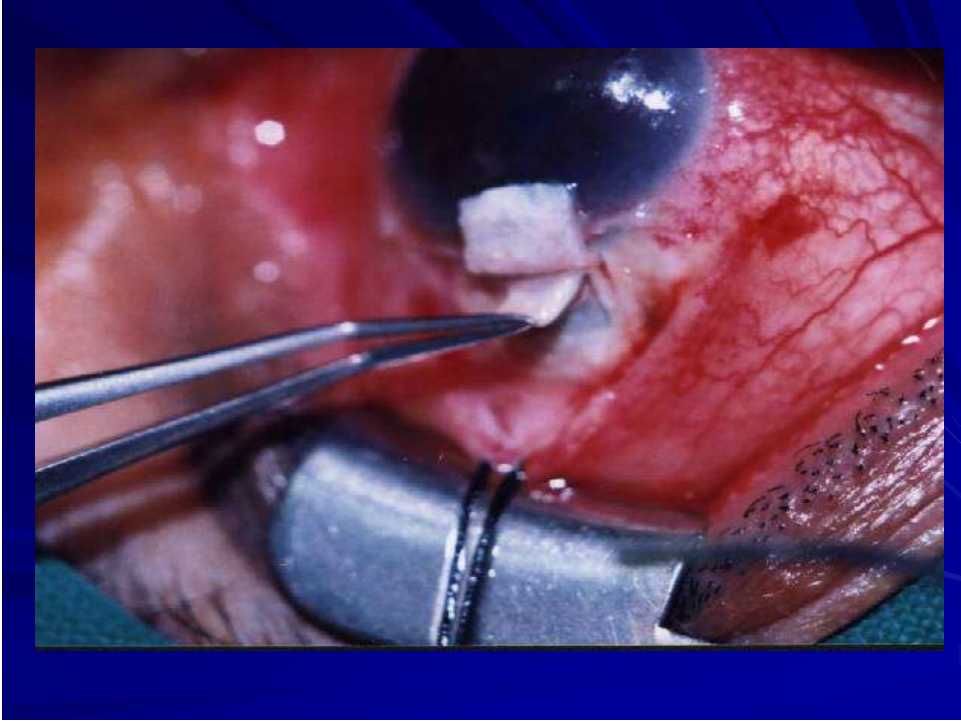
Implantation Of Schlemm's Canal, A Better Way To Do Filtration Surgery

By
Abdel Khalik El Saadani MD
Menoufia University
EGYPT

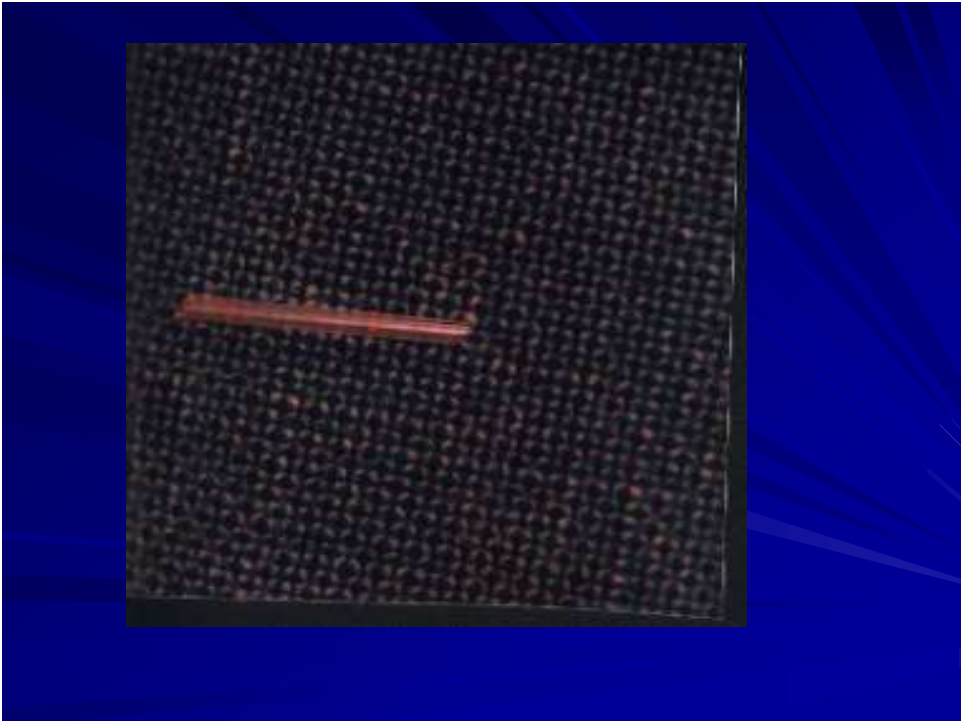
Implantation Of Schlemm's Canal

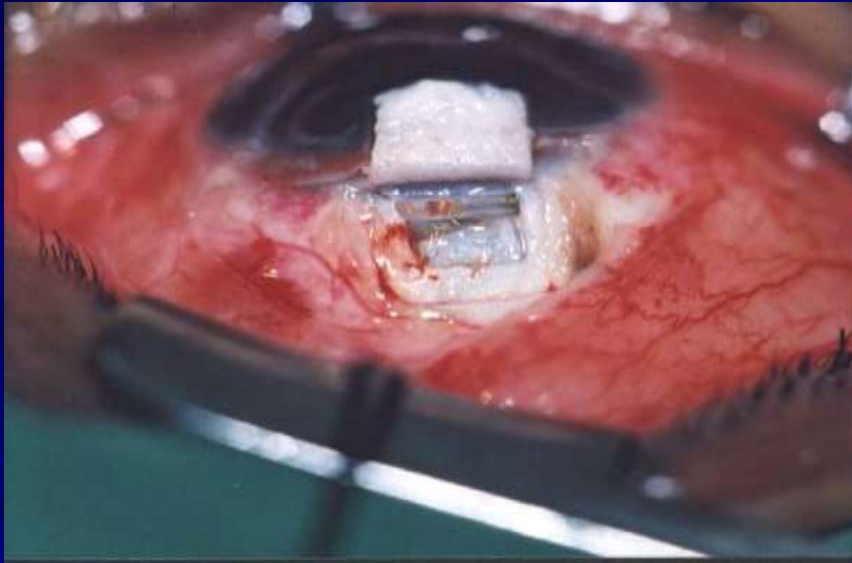
- To creating **direct communication** between the aqueous humor of the anterior chamber and Schlemm's canal by **tube** to by passes the trabecular impermeability or block.
-  in the IOP is obtained by an  in the outflow of aqueous through its normal pathway.











Implant in AC



GLAUCOMA IMPLANTS

- 1- Glaucoma Drainage Devices .
- 2- Implants in Trabeculectomy Surgery
- 3- Mini Drainage Devices{ **Glaucoma Micro Implant**}

GLAUCOMA IMPLANTS

- **Glaucoma implant devices** are generally reserved for cases with resistant glaucoma, cases with failure of trabeculectomy including antimetabolites applications.
- **Many devices** are available. Recent studies suggest an increasing role for G I in the management of resistant glaucomas and used as a primary procedure in special cases.

Indications

- 1-Refractory Glaucoma
- 2-An alternative to trab .and cyclodestructive procedures
- 3-As a **primary procedure** :
 - **A- Neovascular G B- Uveitic G**
 - **C- Traum G D-Silicone O induced G**
 - **E-Infantile or Juvenile G**

Tube Versus Trabeculectomy {TVT Study}

Suggested that in pats. with
prior surgery

Similar degree of IOP lowering

Barton et al Ophthalmology
2011

Tube Versus Trabeculectomy {TVT Study}

Tube shunt surgery had a higher
success rate compared to
Trabeculectomy with MMC during 5 y
follow up in the TVT study

Gedde et al Am. J
Ophthalmol.2012 .

Tube Versus Trabeculectomy {TVT Study}

<i>Tube</i>	<i>Trabeculectomy</i>
■ Failure: 29.8%	■ 46.9%
■ Reop Rate: 9%	■ 29 %

The New Era of Glaucoma Micro – Stent Surgery

*Manasses and Leon ;Ophthalmol
ther.2016.*

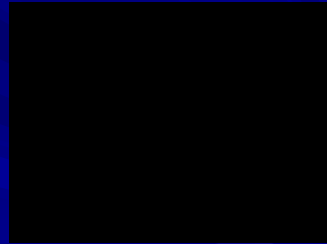
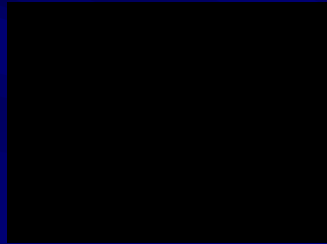
Micro- Invasive Glaucoma Surgery {MIGS} : a review of surgical procedures using Stents

*Pillnat et al ;Clin Ophthalmol
2017*

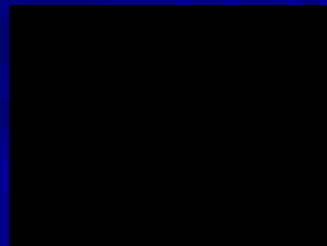
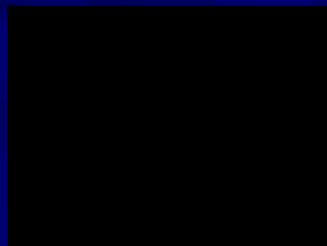
MIGS

- **Canaloplasty** { Godfrey et al 2009}
- **Ex-press mini glaucoma shunt**
{Traverso et al 2005}
- **iStent** { Nichamin 2009}
- **Xen Gel Stent** 2009
- **Solx Gold Shunt**

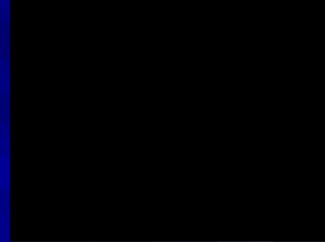
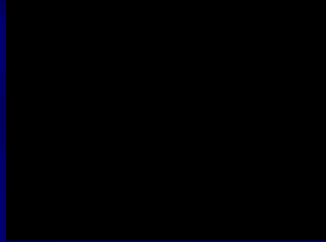
Canaloplasty



EX- PRESS Mini Shunt



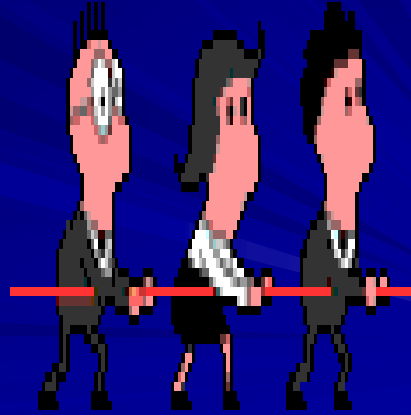
The iStent



IDEAL DRAINAGE IMPLANT

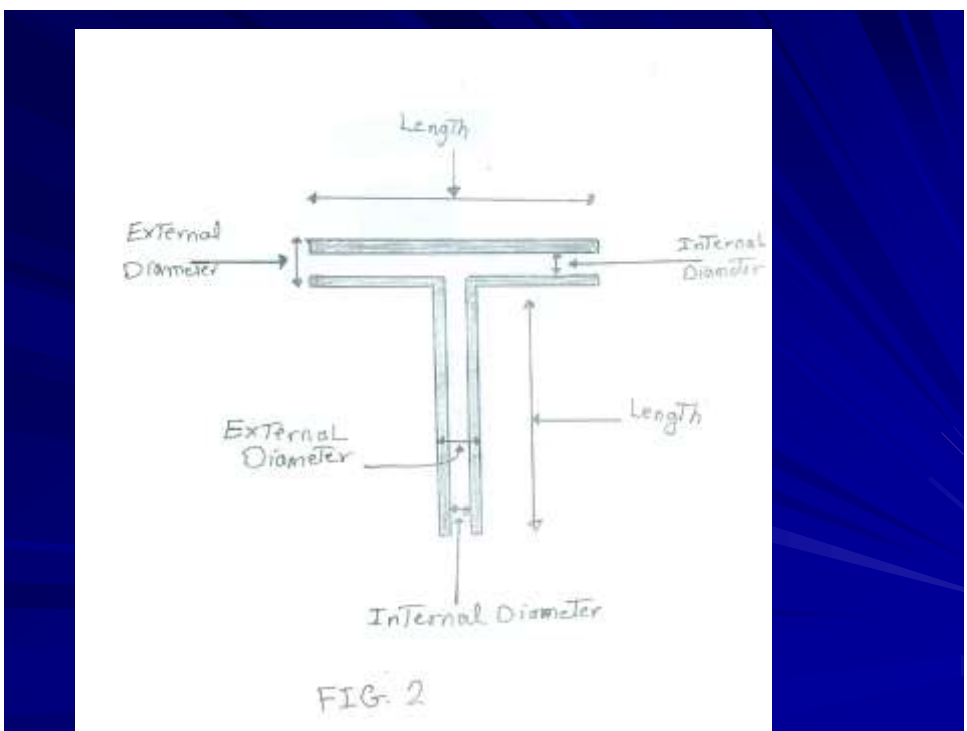
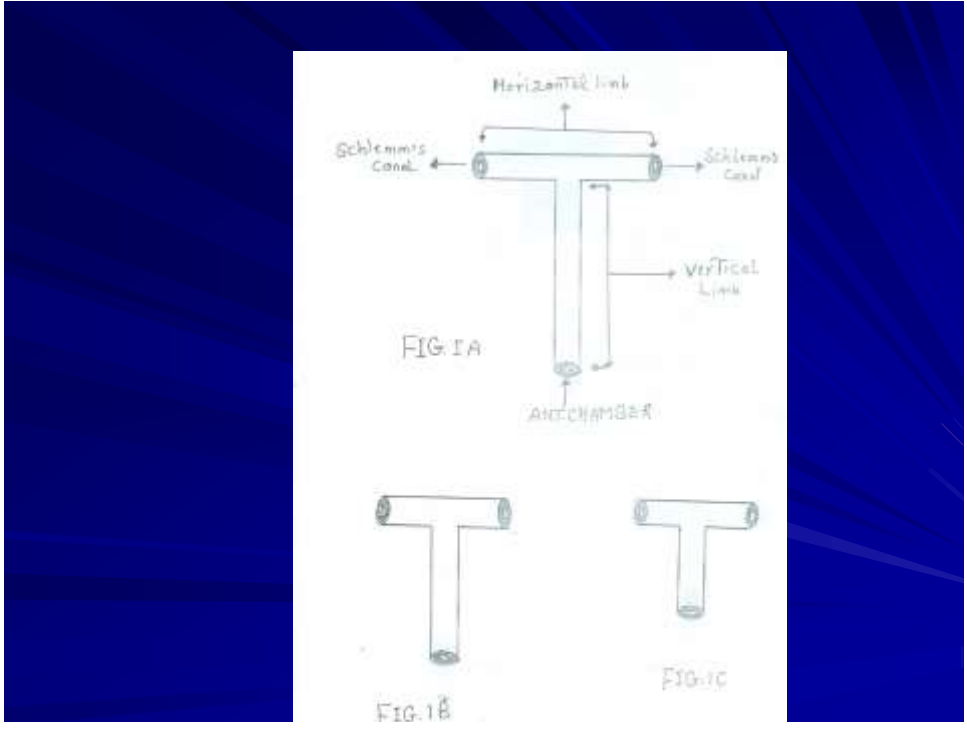
- Easily tolerated by the patient
- Allow the use of IOL
- Allow further ocular surgery if necessary,
- No conj. extrusion should occur
- with control of IOP over a long period
- Not complex and not expensive
- ,all these characters must be available in the new implant.

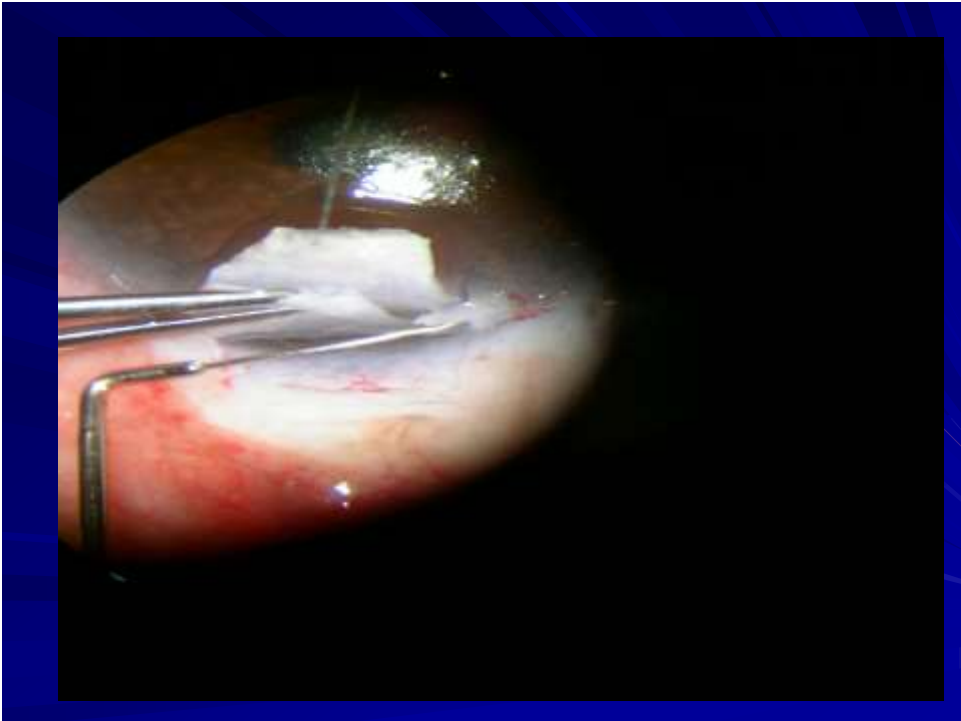
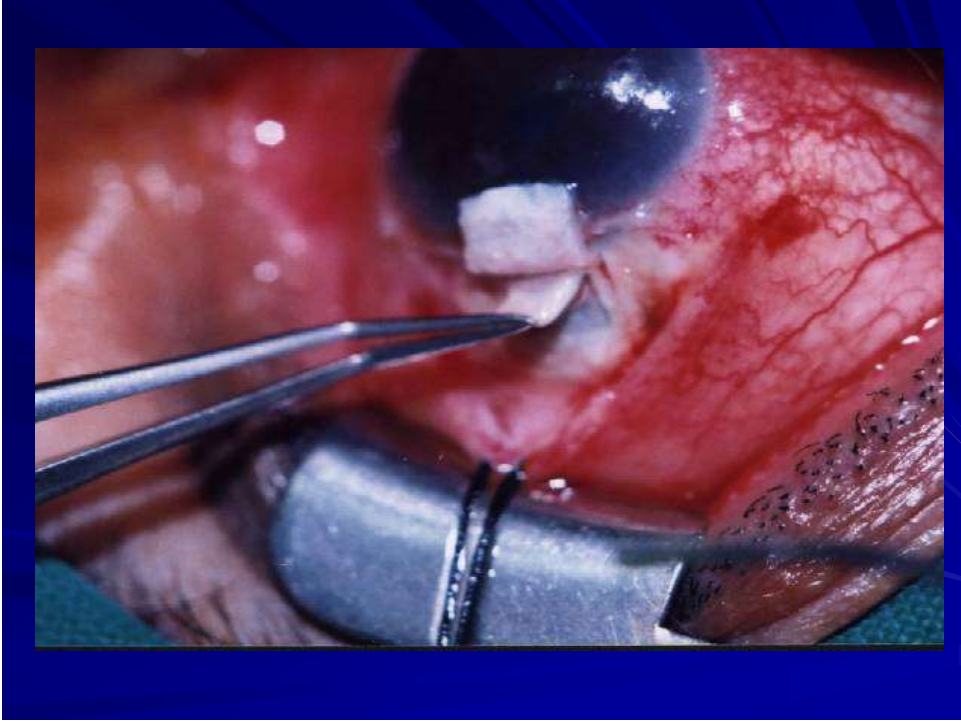
Planning and Problem solving At Its Best

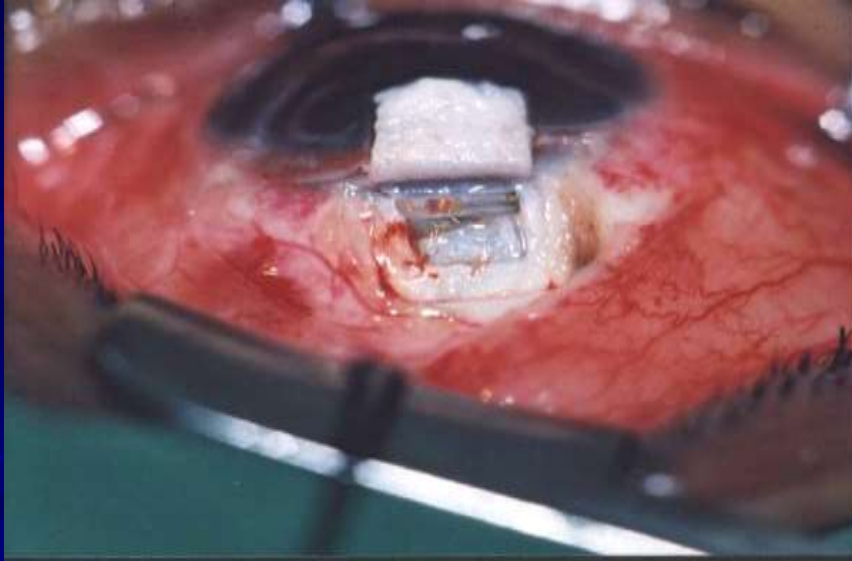


EISAADANI GLAUCOMA TUBE IMPLANT(EGTI)

- A new and improved G Implant.
- **T** shaped tube Implant.







EISAADANI GLAUCOMA TUBE IMPLANT(EGTI

***3 surg procedure at the same
time:***

1-Non P D Scler .

2- Visco Canalostomy

3-T tube Implant.

Autofixation –Auto regulation .

Triple Functioning Procedure.

Triple Drainage GLAUCOMA TUBE IMPLANT

- *I believe that we do a lot of good work. But we lack good documentation and good presentation .That is why we have to work on that basic professional requirement .*



