

One and half year experience in Baerveldt glaucoma implant

By

Mo'mena Ahmad Abdel-Razeik Awad-Allah

MD, FRCS

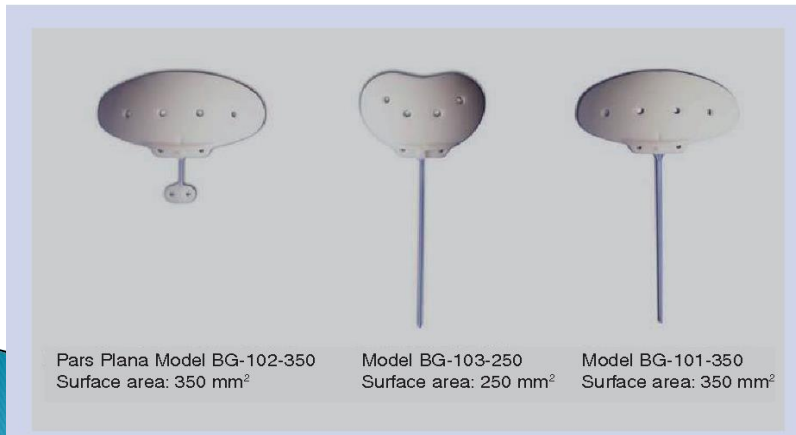
Lecturer of Ophthalmology

Ain Shams University

▶ **I have no financial interest to
disclose**

Background

- ▶ It was invented by Prof. John Baerveldt.
- ▶ FDA approved in 1993.

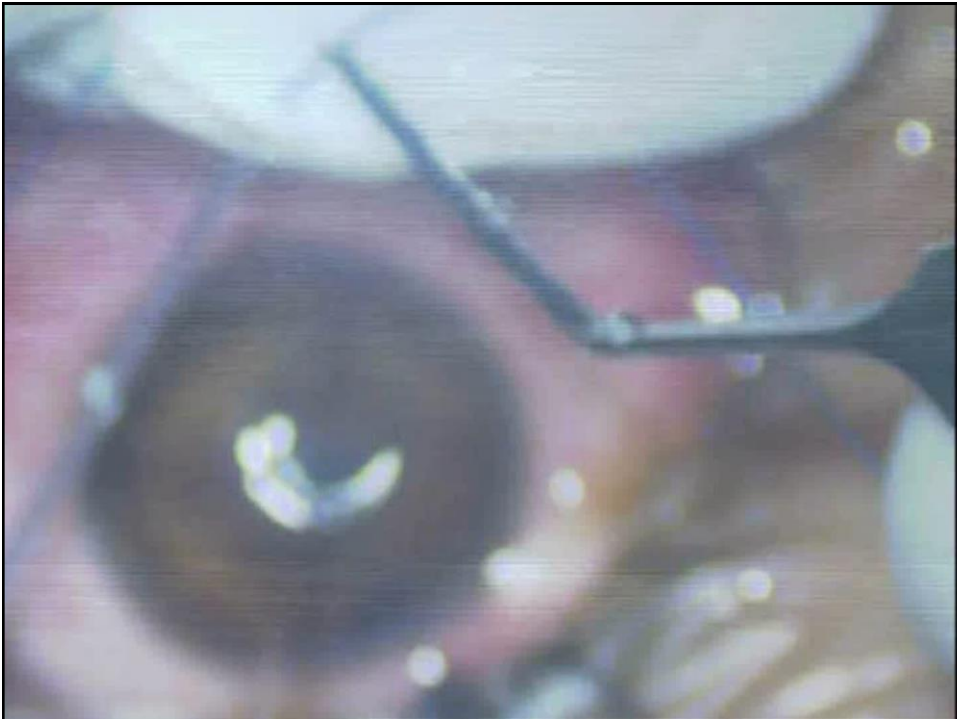


What we did

- ▶ Twenty eyes of 18 patients.
- ▶ Earliest 1.5 years ago.
- ▶ **Indications:**
 - ✓ Seven eyes with silicon- related:
 - 6 eyes after SOR.
 - 1 eye silicon filled.
 - ✓ Six eyes with congenital glaucoma:
 - 3 after failed multiple trabeculectomy +/- trabeculotomy.
 - 3 after failed Ahmad valve.

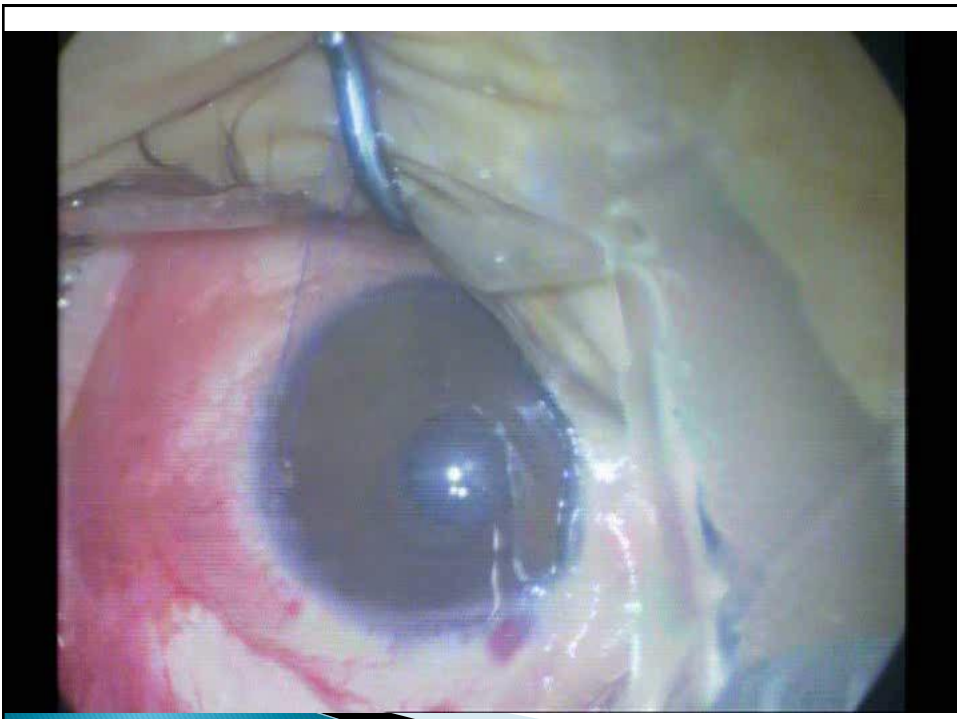
Cont.

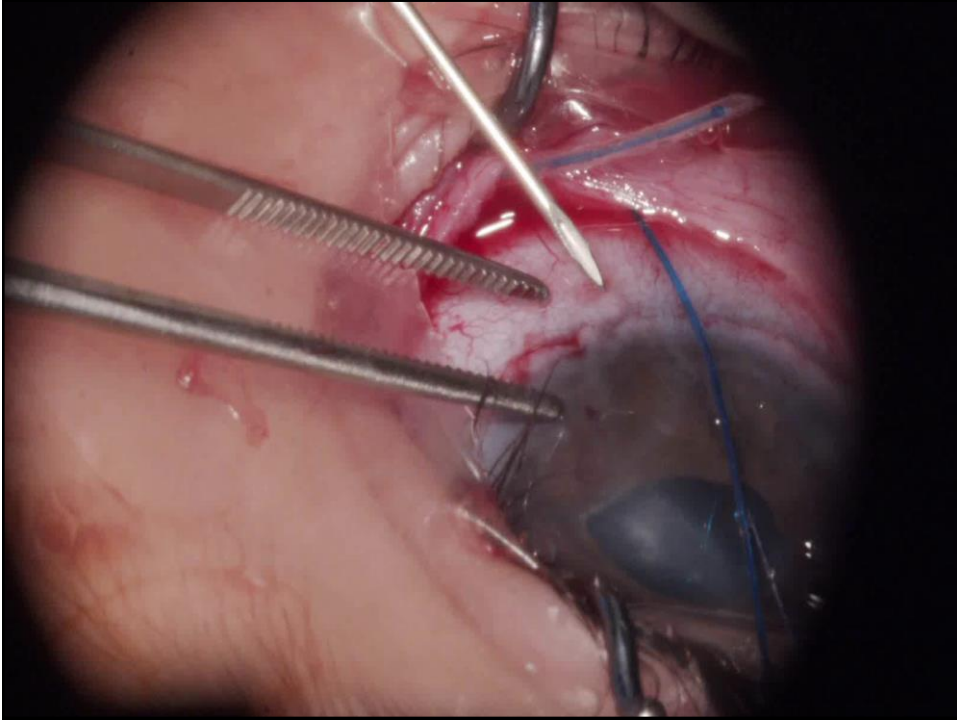
- ✓ One eye with juvenile glaucoma (failed SST).
- ✓ Two eyes of a patient with Steven Johnson syndrome.
- ✓ One eye in a Weill Marchesani syndrome patient.
- ✓ One eye with neovascular glaucoma.
- ✓ One eye with chronic Behçet uveitis.
- ✓ One eye for Boston K- pro.



Intra operative difficulties

- ▶ One patient implanted over the muscles (AL= 21 ml).





Outcome

- ▶ Average IOP preoperative was 35mmHg.
- ▶ Average IOP postoperative was 14 mmHg.
- ▶ Most of the patient stopped all antiglaucoma treatment (only 3 on a single topical).
- ▶ Non of the patient required another glaucoma surgery.

Complications

- ▶ Conjunctival recession and exposure (only 2 patients required resuturing).
- ▶ Three patients with early release of vicryl.

Overall

- ▶ Baerveldt's glaucoma shunt device is a perfect way to manage difficult glaucoma cases.
- ▶ Though the technique seems to be difficult yet it has a quick learning curve.
- ▶ The procedure is very effective and safe.

Take home message

Don't waste your time and
the patient's ganglion cells!